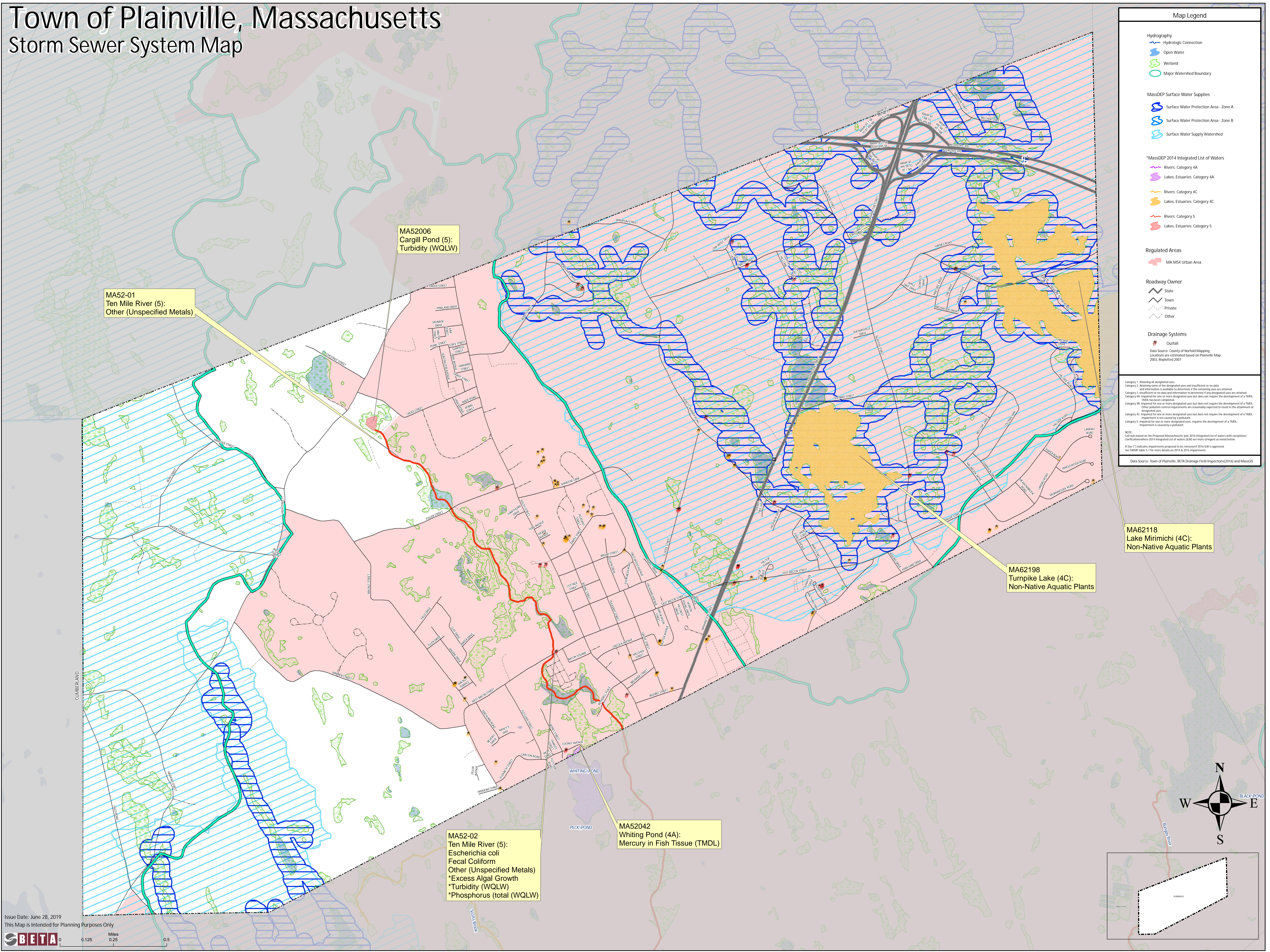


Town of Plainville, Massachusetts

Storm Sewer System Map



Map Legend

Hydrography

- Hydrologic Connection
- Open Water
- Wetland
- Major Watershed Boundary

MassDEP Surface Water Supplies

- Surface Water Protection Area - Zone A
- Surface Water Protection Area - Zone B
- Surface Water Supply Watershed

*MassDEP 2014 Integrated List of Waters

- Rivers: Category 4A
- Lakes, Estuaries: Category 4A
- Rivers: Category 4C
- Lakes, Estuaries: Category 4C
- Rivers: Category 5
- Lakes, Estuaries: Category 5

Regulated Areas

- MA MS4 Urban Area

Roadway Owner

- State
- Town
- Private
- Other

Drainage Systems

- Outfall

Data Source: County of Norfolk Mapping
Locations are estimated based on Plainville Map 2003. Registered 2007

Category 1: Attaining all designated uses.
Category 2: Attaining some of the designated uses and insufficient or no data and information is available to determine if the remaining uses are attained.
Category 3: Insufficient or no data and information to determine if any designated uses are attained.
Category 4A: Impaired for one or more designated uses but does not require the development of a TMDL.
Category 4B: Impaired for one or more designated uses but does not require the development of a TMDL. Other pollution control requirements are reasonably expected to result in the attainment of designated uses.
Category 4C: Impaired for one or more designated uses but does not require the development of a TMDL. Impairment is not caused by pollutants.
Category 5: Impaired for one or more designated uses, requires the development of a TMDL. Impairment is caused by pollutants.

NOTE:
Call each based on the Proposed Massachusetts year 2016 Integrated List of waters with exceptions/clarifications from 2014 Integrated List of waters (ILW) are more stringent as noted below.
A Star (*) indicates impairments proposed to be removed if 2016 ILW is approved.
See SWAMP table 5-1 for more details on 2014 & 2016 impairments.

Data Source: Town of Plainville, BETA Drainage Field Inspectors(2016) and MassGIS

